


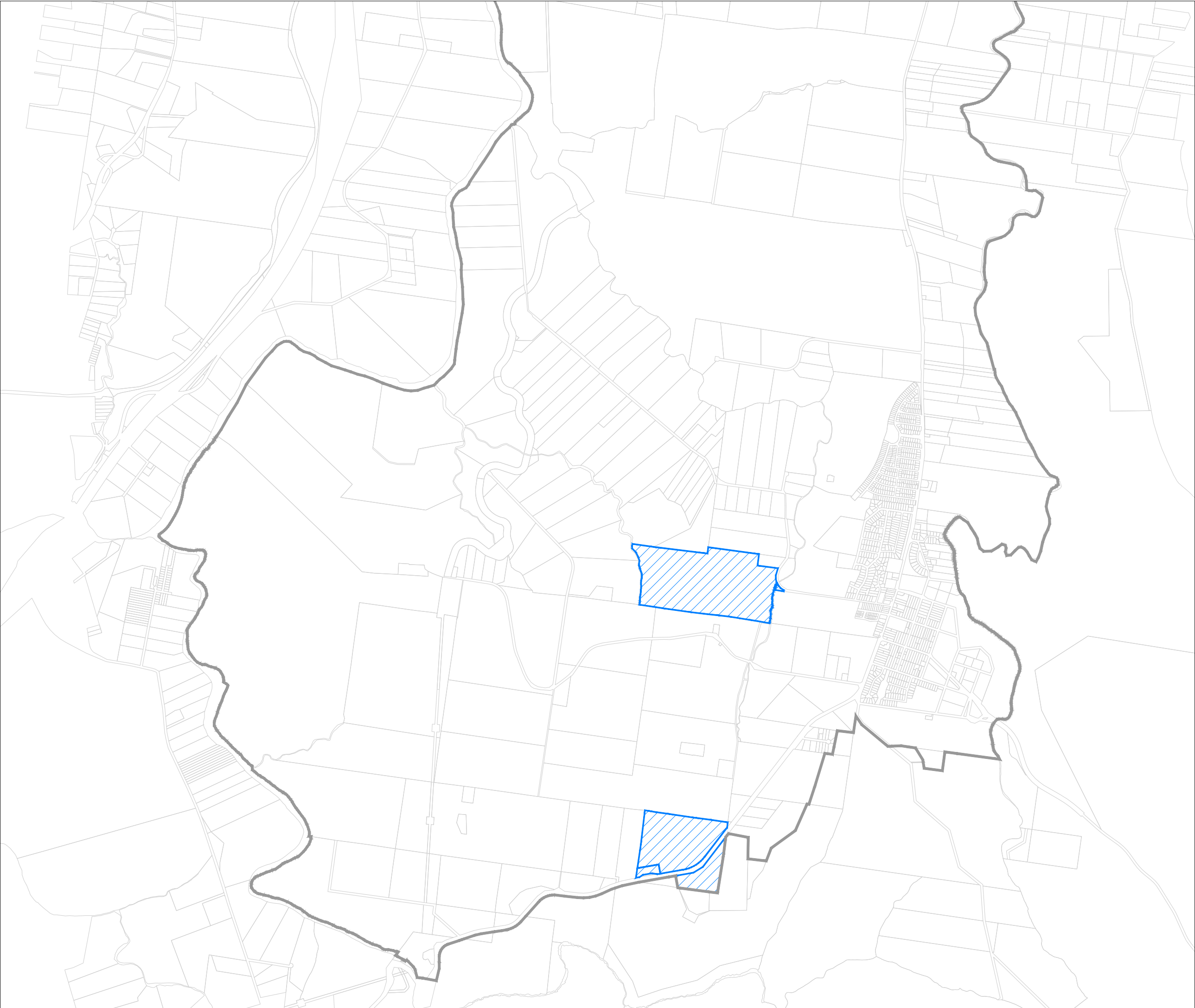


State Environmental Planning
Policy (Sydney Region
Growth Centres) 2006

Greater Macarthur Growth Area
Appin (Part 2) Precinct Plan
Land Application Map

Legend

-  Land to which the Appin (Part 2) Precinct Plan applies
-  Greater Macarthur Growth Area Boundary
-  Cadastre (DFSI-SS, 07/2021)



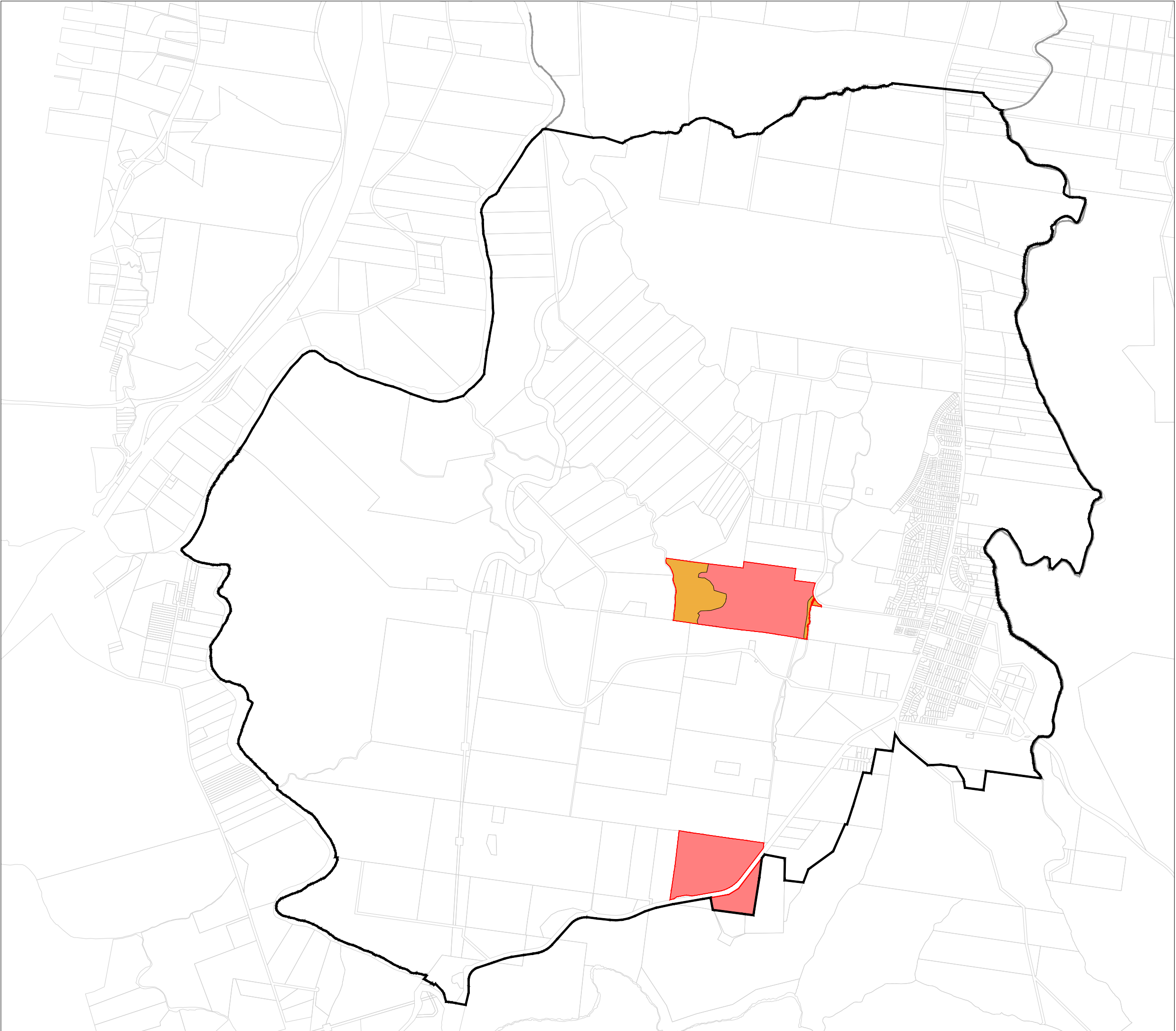
DRAFT

State Environmental Planning
Policy (Sydney Region
Growth Centres) 2006

Greater Macarthur Growth Area
Appin (Part 2) Precinct Plan
Land Zoning Map

- Legend
- Appin & North Appin Precincts Boundary
 - Land to which the Appin (Part 2) Precinct Plan applies
 - Greater Macarthur Growth Area Boundary
 - Cadastre (DFS-I-SS, 07/2021)






- Land Zoning
- C2 Environmental Conservation
 - UD Urban Development




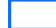
DRAFT

State Environmental Planning Policy (Precincts—Western Parkland City) 2021


Greater Macarthur Growth Area
Appin (Part 1 & 2) Precincts Plan
Transport Corridors Map
Sheet TRC

-  Transit Corridor (45.2m)*
-  OSO2 Corridor (60m)**
-  East-West Road
-  Land to which the Appin (Part 1) Precinct Plan
-  Land to which the Appin (Part 2) Precinct Plan

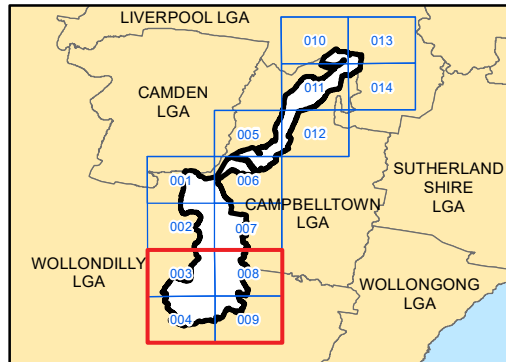
Precinct Boundary

-  Greater Macarthur Growth Area
-  Greater Macarthur Growth Area Precinct

Cadastre

-  Cadastre 26/04/2023 © Spatial Services

* TfNSW require a 45.2m transit corridor, this width and alignment may be refined and reduced based on further detail design and subject to TfNSW approval.
 ** TfNSW require a 60m OSO2 corridor, this width and alignment may be refined and reduced based on further detail design and subject to TfNSW approval.

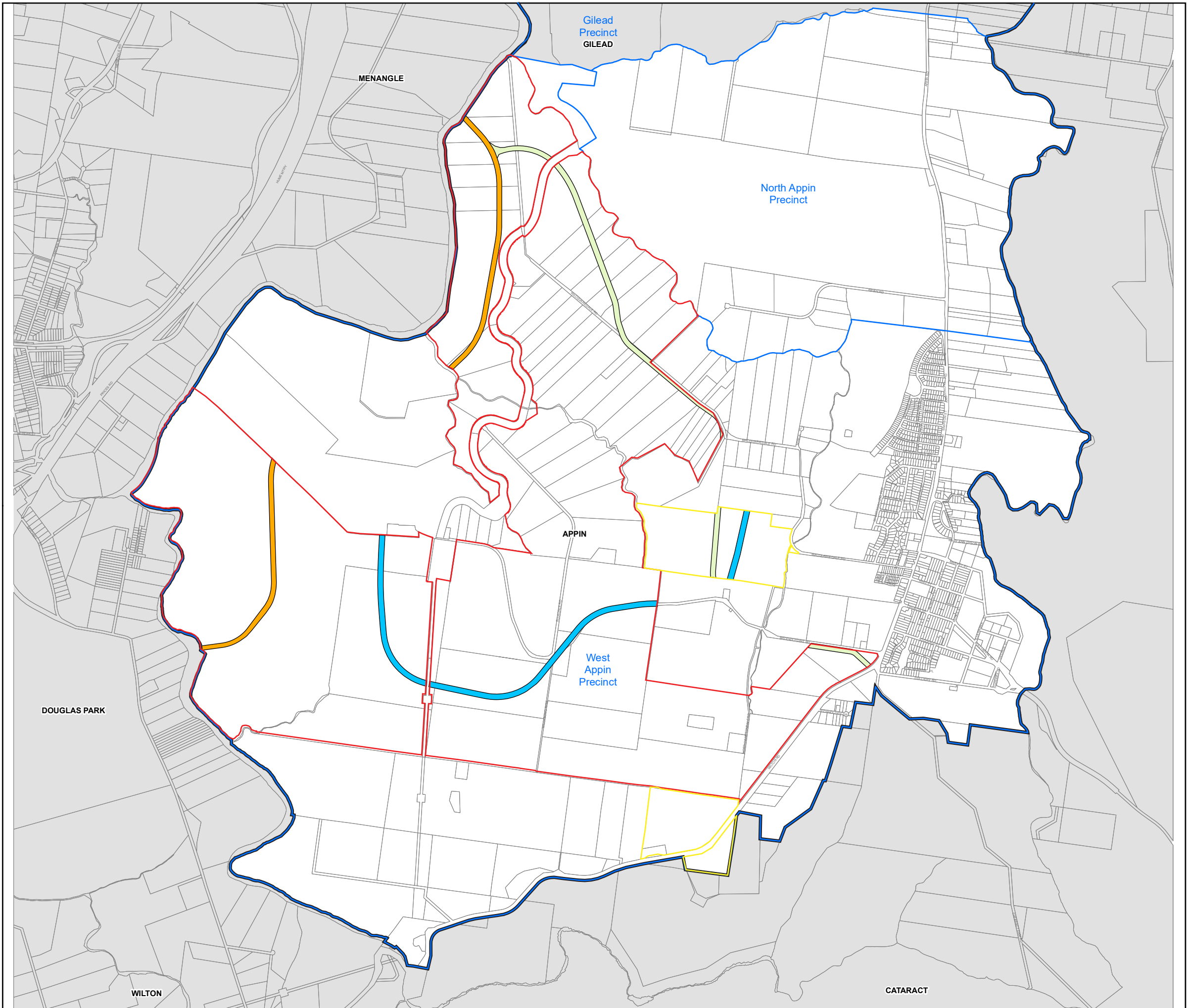


Projection: GDA 2020
MGA Zone 56



Scale: 1:30, 000 @ A3

Map Identification Number: SEPP_SRGC_GMA_TRC



State Environmental Planning
Policy (Sydney Region
Growth Centres) 2006

Greater Macarthur Growth Area
Appin (Part 2) Precinct Plan
Lot Size Map

Legend

Land to which the Appin (Part 2)
Precinct Plan applies

Appin & North Appin Precincts
Boundary

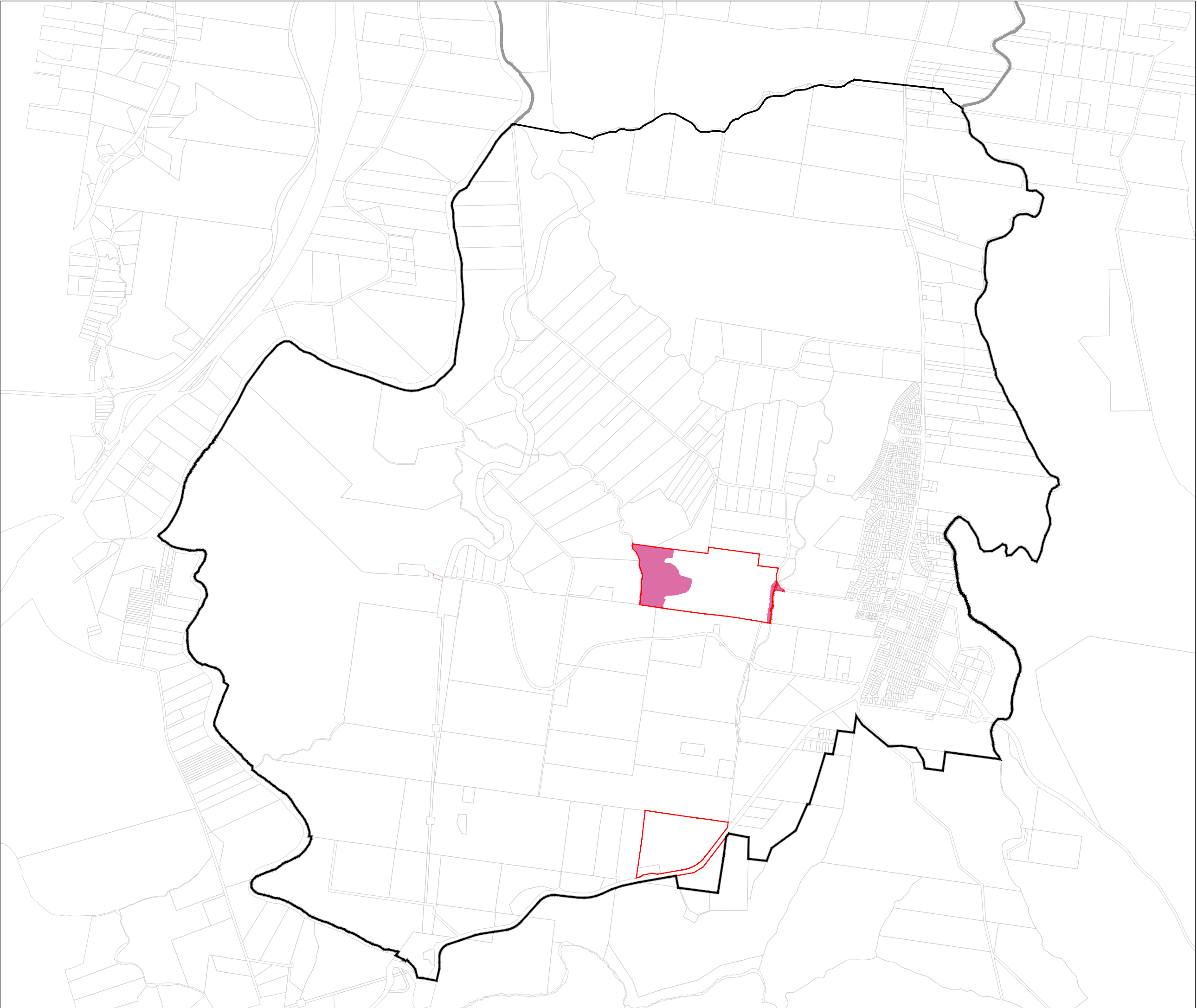
Greater Macarthur Growth Area
Boundary

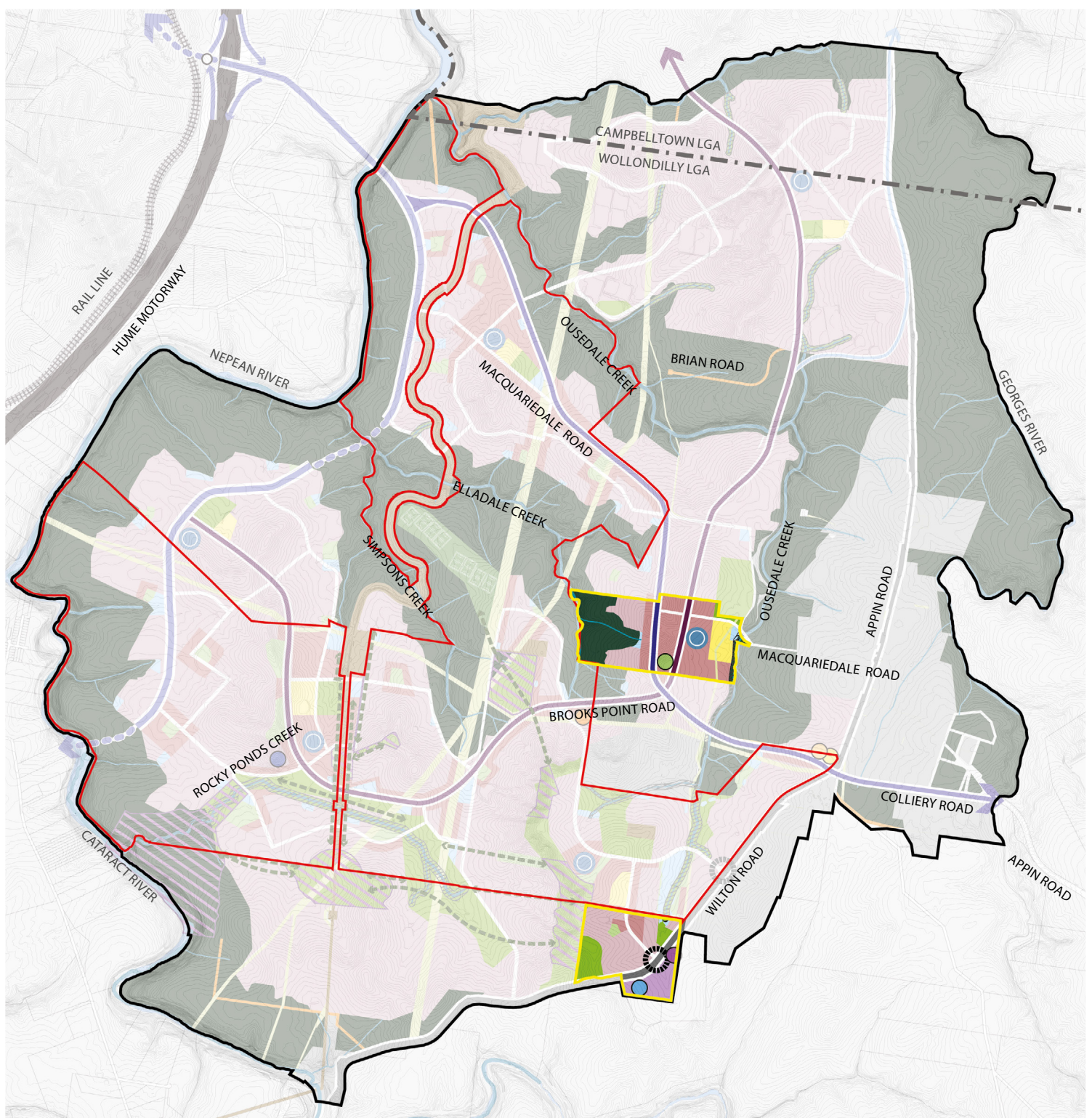
Cadastre (DFSI-SS, 07/2021)

Minimum Lot Size

40ha

DRAFT





LEGEND:

	Appin & North Appin Precincts Boundary		Riparian Corridor		Outer Sydney Orbital Stage 2
	Appin (Part 1) Precinct Boundary		NSW State Heritage listing		Public Transport Corridor Stage 1
	Appin (Part 2) Precinct Boundary		Curtilage (Place of First Nations Cultural Landscape) SHR 02067 Plan 3294		Road Connection - By Others
	LGA Boundary		Heritage Items		Collector Streets
	Waterways		Low Density Residential		Roundabout
	C2 Conservation Land		Medium Density Residential		Proposed Water Recycling Plant
	Existing Road within C2 Conservation Land		Stormwater Management		Proposed Zone Substation
	Local Park		Schools		Proposed Fire & Rescue Depot
	District Park		Employment Lands		Proposed Police Station
	Regional Open Space		Mixed Use Centres (including retail/commercial)		Proposed RFS Depot
	Easements (Active and passive recreation)		East-West Connection Road		Proposed Ambulance Depot
	Green Links		Public Transport Corridor		Proposed Integrated Health Hub

APPIN (PART 2) PRECINCT STRUCTURE PLAN

0 500 1000 1500 2000

1:40,000 @ A4



DATE: 03-10-24

REVISION NO:
APSP (PART) ISSUE B